



Easy
Reference to
Teaching and Learning
TAXONOMY

SOFT SKILLS
Elements



الجامعة الإسلامية العالمية ماليزيا
INTERNATIONAL ISLAMIC UNIVERSITY MALAYSIA
وَمِنْ بَرَكَاتِهِ الْإِسْلَامُ الْبَارِعُ الْبَارِعُ الْبَارِعُ

Garden of Knowledge and Virtue



الجامعة الإسلامية العالمية ماليزيا
INTERNATIONAL ISLAMIC UNIVERSITY MALAYSIA
يُؤَسَّسُ فِي رَجَبِ الثَّالِثِ مِنْ سَنَةِ ١٤٠١ هـ

IIUM Philosophy

The philosophy of the university was inspired by the recommendations of the First World Conference on Muslim Education held in Mecca in A.H. 1398/ A.D 1977. The spirit of this philosophy is based on the Holy Qur'an, in particular the five verses revealed to the Prophet Muhammad S.A.W., namely Al-Alaq, verses 1-5.

According to this philosophy, knowledge shall be propagated in the spirit of Tawhid, leading towards the recognition of Allah as the Absolute Creator and Master of mankind.

The spirit behind this recognition of Allah as the Lord of the World (*Rabb al-Alamin*) represents the apex in the hierarchy of knowledge. Thus, all disciplines of knowledge should lead towards subservience to this truth.

This is because knowledge is a form of trust (*amanah*) from Allah to man, and hence man should utilize knowledge as the servant and vicegerent (*khalifah*) of Allah on Earth.

In this way, knowledge is regarded as an act of worship.



الجامعة الإسلامية العالمية ماليزيا
INTERNATIONAL ISLAMIC UNIVERSITY MALAYSIA
يُؤَسَّسُ فِي ١٩٨١ بِمَلَايَا

IIUM Vision

IIUM aims at becoming a leading international centre of educational excellence which:

1. Revitalizes the intellectual dynamism of Islam and the Muslim Ummah;
2. Integrates Islamic revealed knowledge and values in all academic disciplines and educational activities;
3. Seeks to restore a leading and progressive role of the Muslim Ummah in all branches of knowledge; thereby,
4. Contributing to the improvement and upgrading of the qualities of human life and civilization.

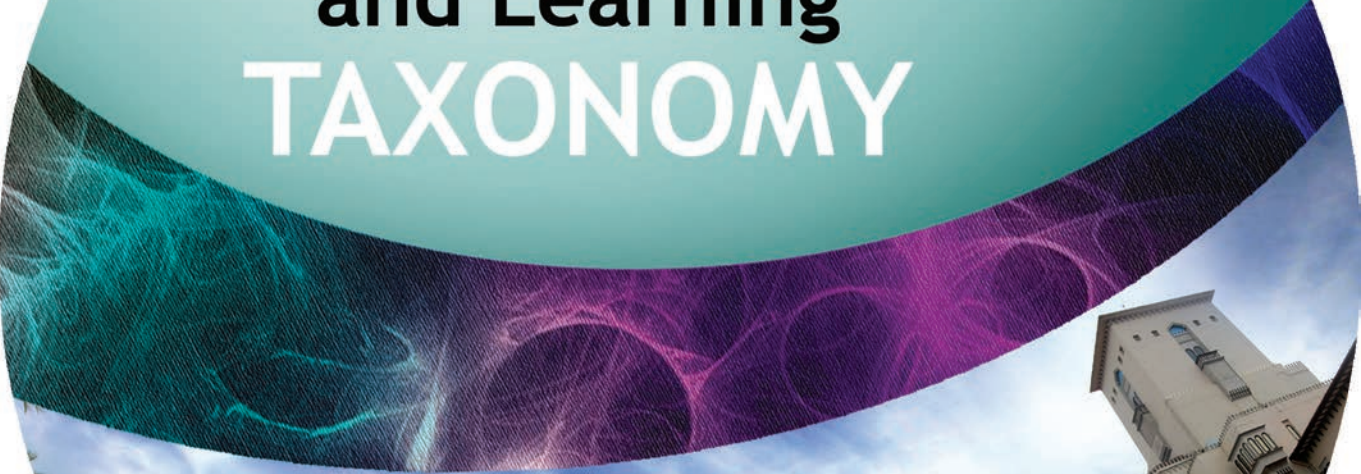
IIUM Mission

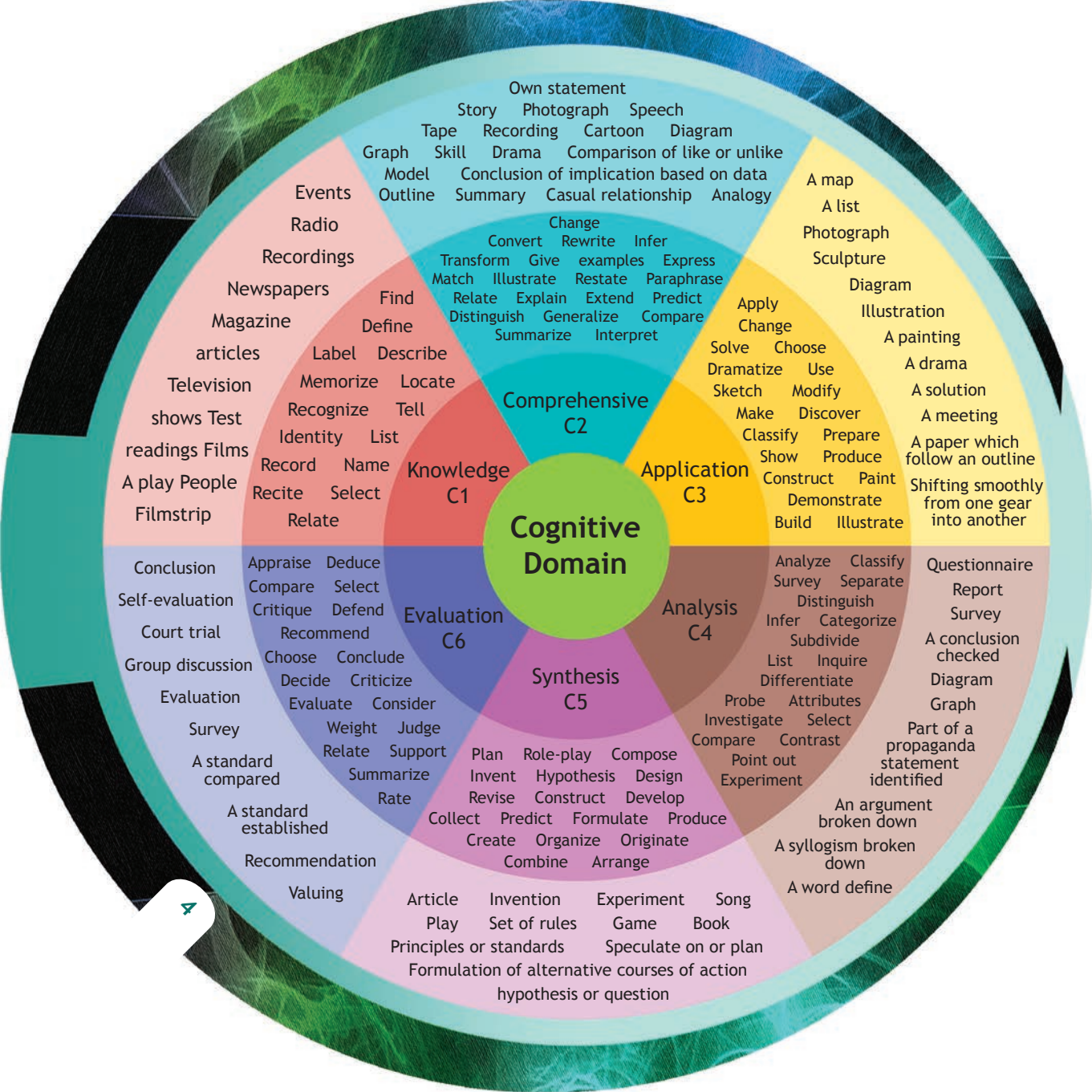
Integration
Islamization
Internationalization, and
Comprehensive Excellence



الجامعة الإسلامية العالمية ماليزيا
INTERNATIONAL ISLAMIC UNIVERSITY MALAYSIA
يُؤْتِي الْعِلْمَ حُجْرَاتِ الْجَنَّةِ
بِلَدُنَا

Teaching and Learning TAXONOMY





Psychomotor Domain

Perception
P1

Set
P2

Guided
Response
P3

Mechanism
P4

Complex
Overt Response
P5

Adaptation
P6

Origination
P7

Begin Proceed
Explain Move React
State Show Display
Start Volunteering Copy
Re-create Perform
Trace Response
Execute

Detect
Describe
Differentiate
Isolate Choose
Distinguish
Select Relate
Identify
Repeat Copy
Follow Show

Arrange
Originate Create
Build Construct
Design Compose
Combine Initiate
Invent Construct
Specify Develop
Manage
Rank

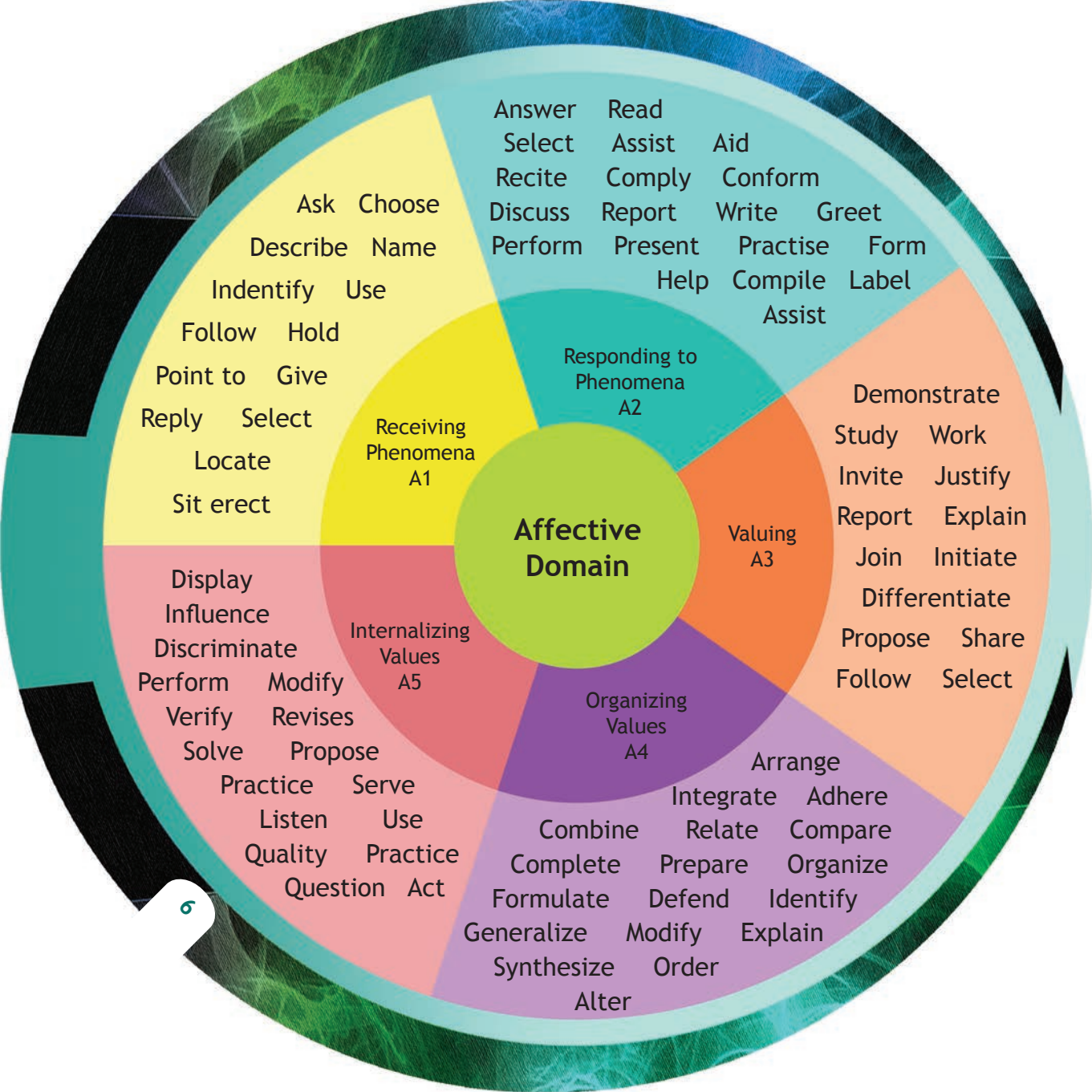
Alter
Adapt Vary Change
Rearrange Reorganize
Revise Integrate Modify
Formulate Combine Solve
Coordinate Master
Develop

Copy
Trace
React Respond
Assemble Control
Measure Reproduce
Perfect Implement
Organize Calibrate
Demonstrate
Complete
Build

Mix Fix
Assemble Heat
Measure Mend
Dismantl

Calibrate Display
Grind Sketch
Manipulate
Fasten Organize
Construct

Calibrate
Assemble
Build Construct
Display Dismantle
Mend Fasten Fix
Measure Sketch
Manipulate Mix
Organize





Social Domain

Communication
S1

Teamwork
S2

Management
S3

Leadership
S4

Delivering a message

Preparing a message

Receiving a message

Inviting interactions

Performing in a team

Performing in an organization

Living in society

Demonstrating cultural competence

Envisioning

Building a following

Maintaining commitment

Empowering

Managing people

Managing communication

Managing resource

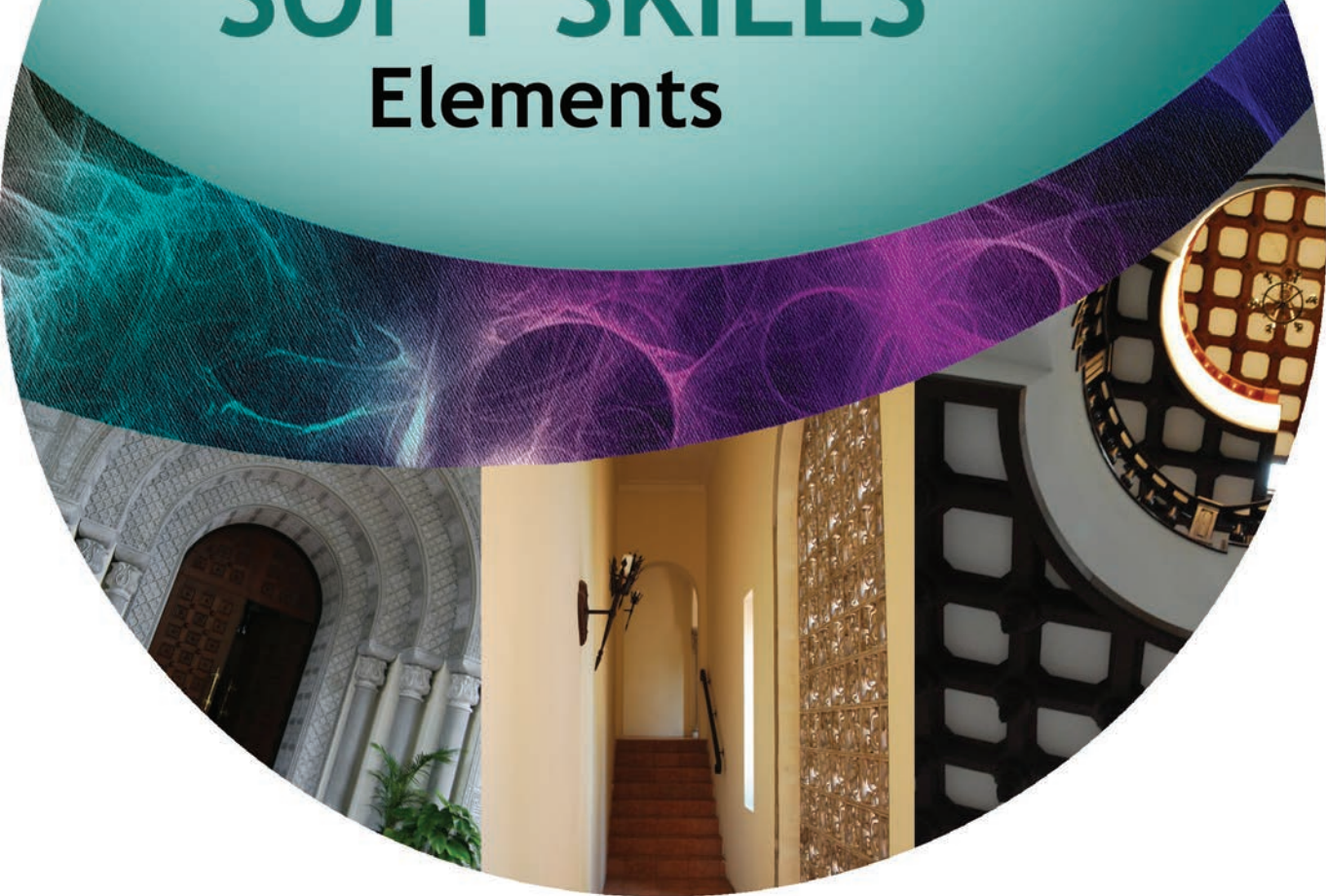
Building and maintaining teams



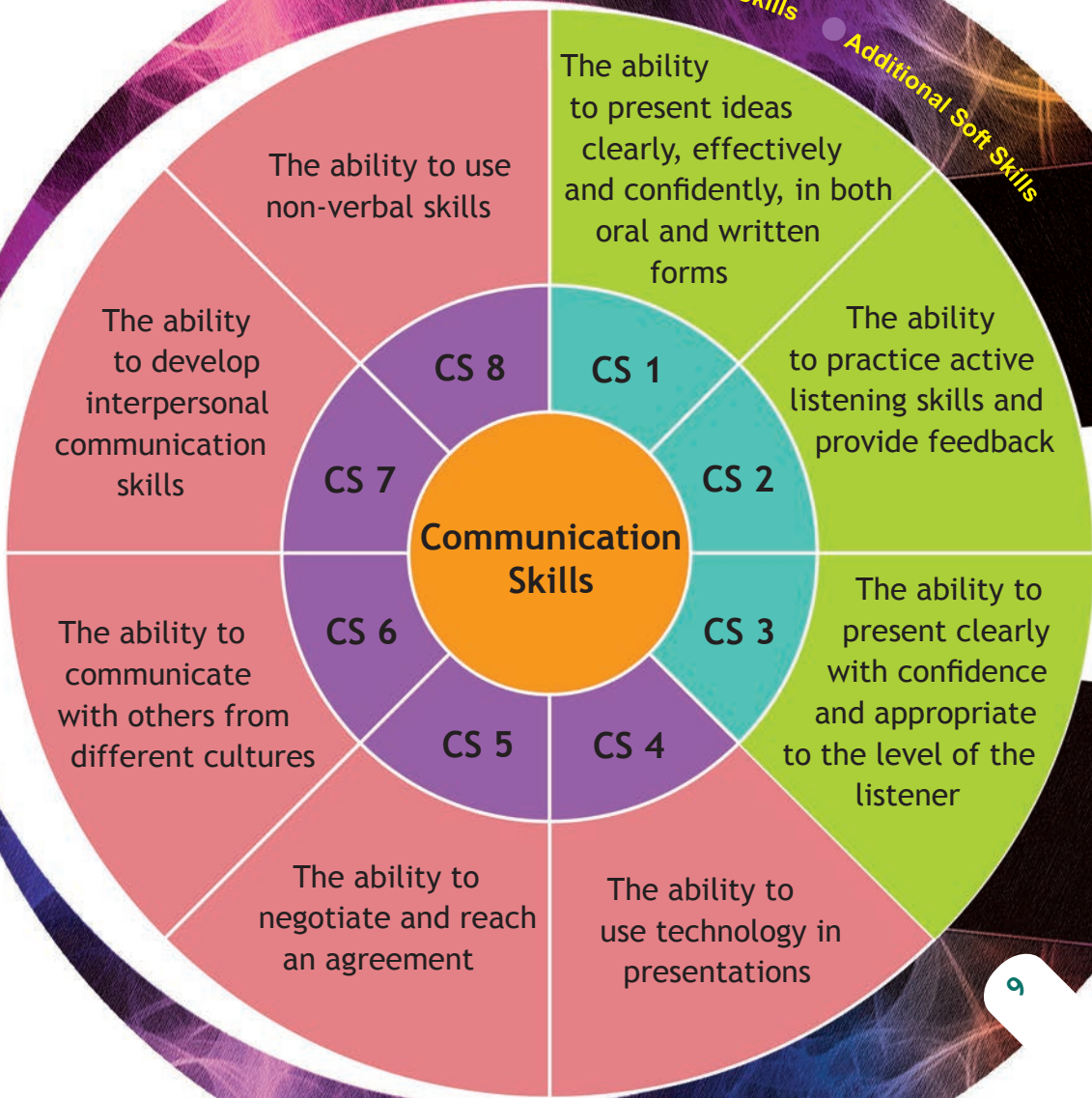
الجامعة الإسلامية العالمية ماليزيا
INTERNATIONAL ISLAMIC UNIVERSITY MALAYSIA
بِسْمِ اللَّهِ الرَّحْمَنِ الرَّحِيمِ

SOFT SKILLS

Elements



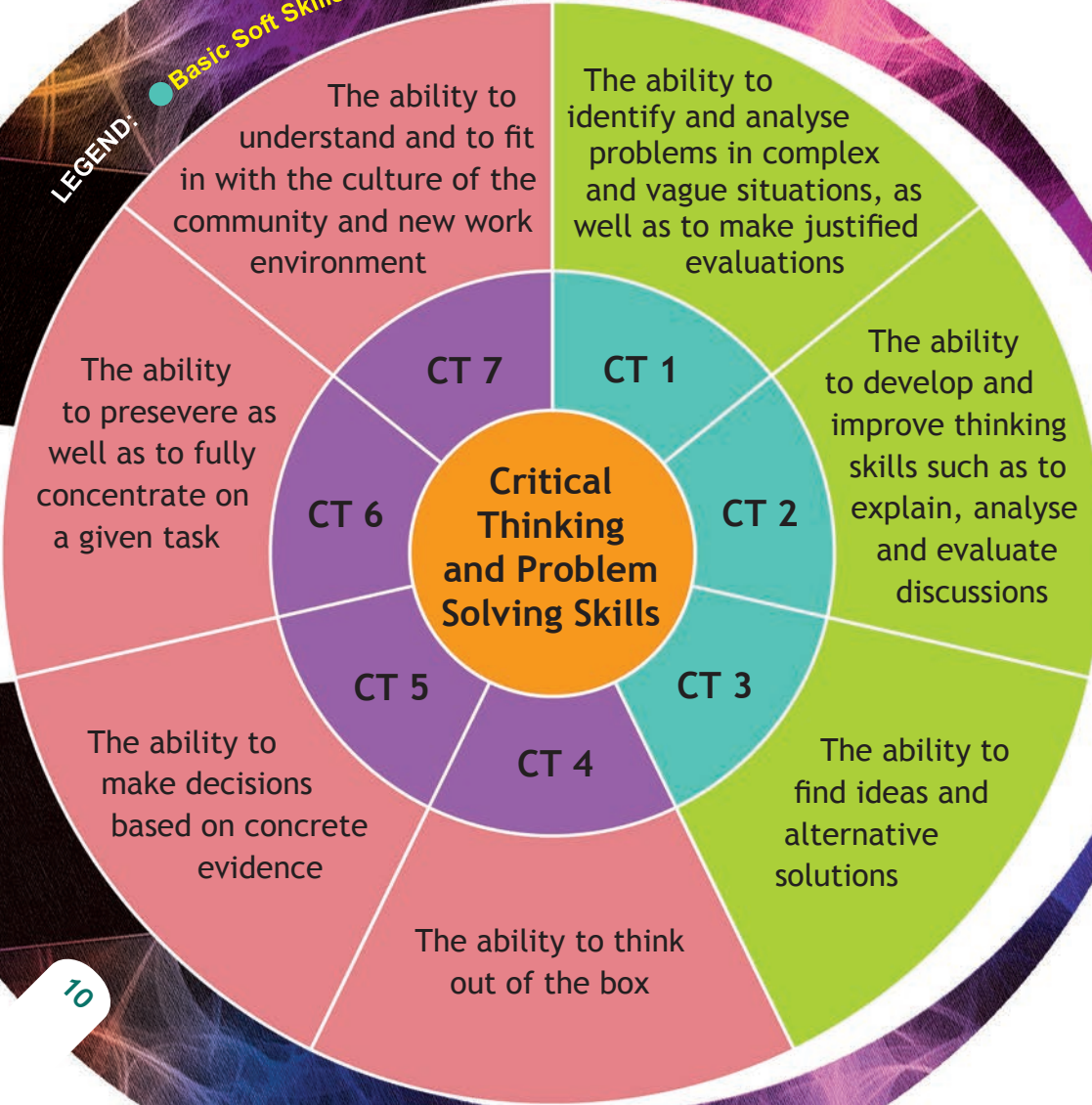
LEGEND: ● Basic Soft Skills ● Additional Soft Skills



LEGEND:

● Basic Soft Skills
● Additional Soft Skills

Critical Thinking and Problem Solving Skills



LEGEND: ● Basic Soft Skills ● Additional Soft Skills

The ability to build good relations, interact with others and work effectively with them to achieve the same objectives

TS 1

The ability to understand and interchange roles between that of a team leader and a team member

TS 2

The ability to recognize and respect the attitude, behaviour and beliefs of others

TS 3

The ability to contribute towards the planning and coordination of the team's efforts

TS 4

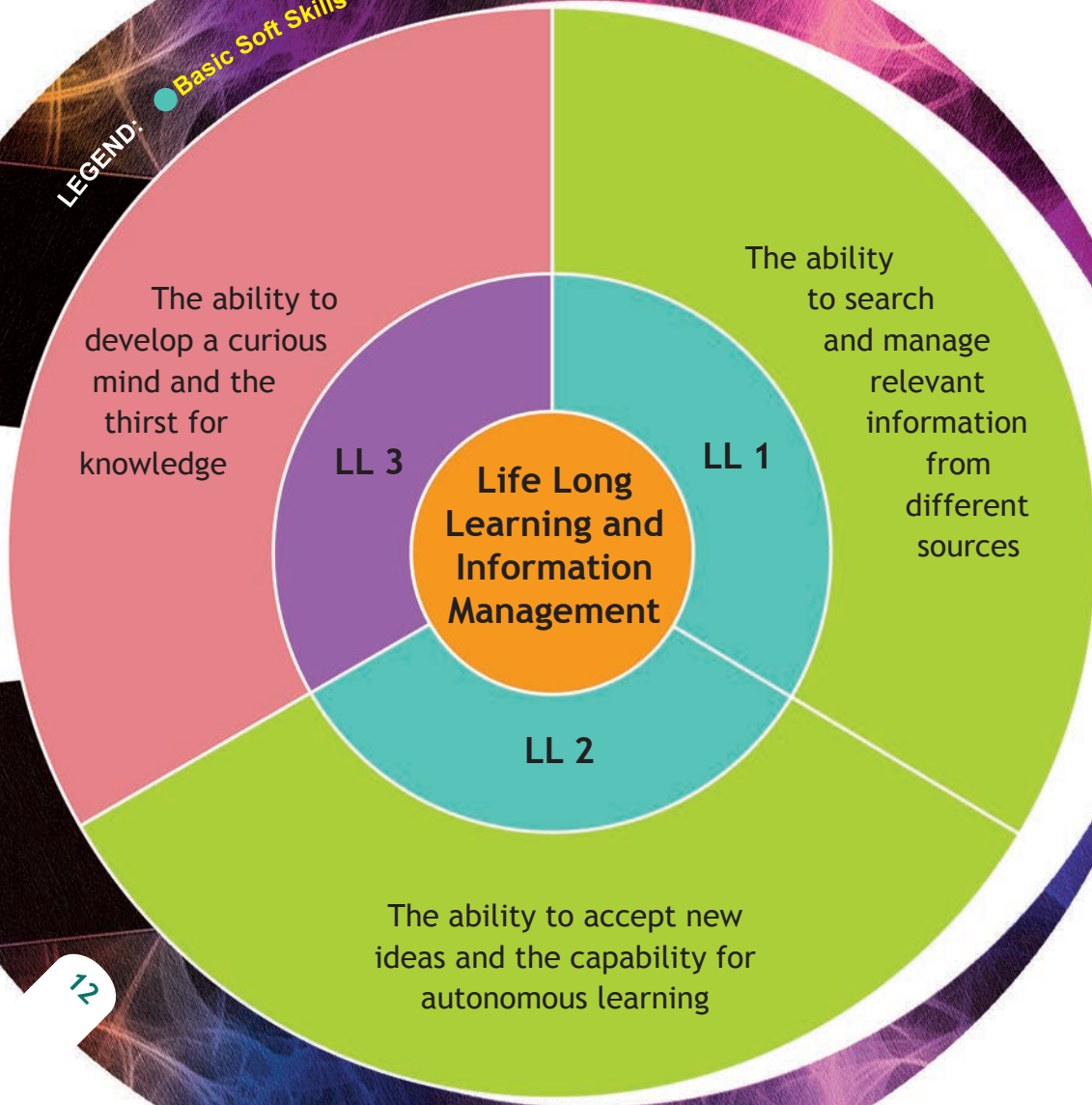
Be responsible for the group's decision

TS 5

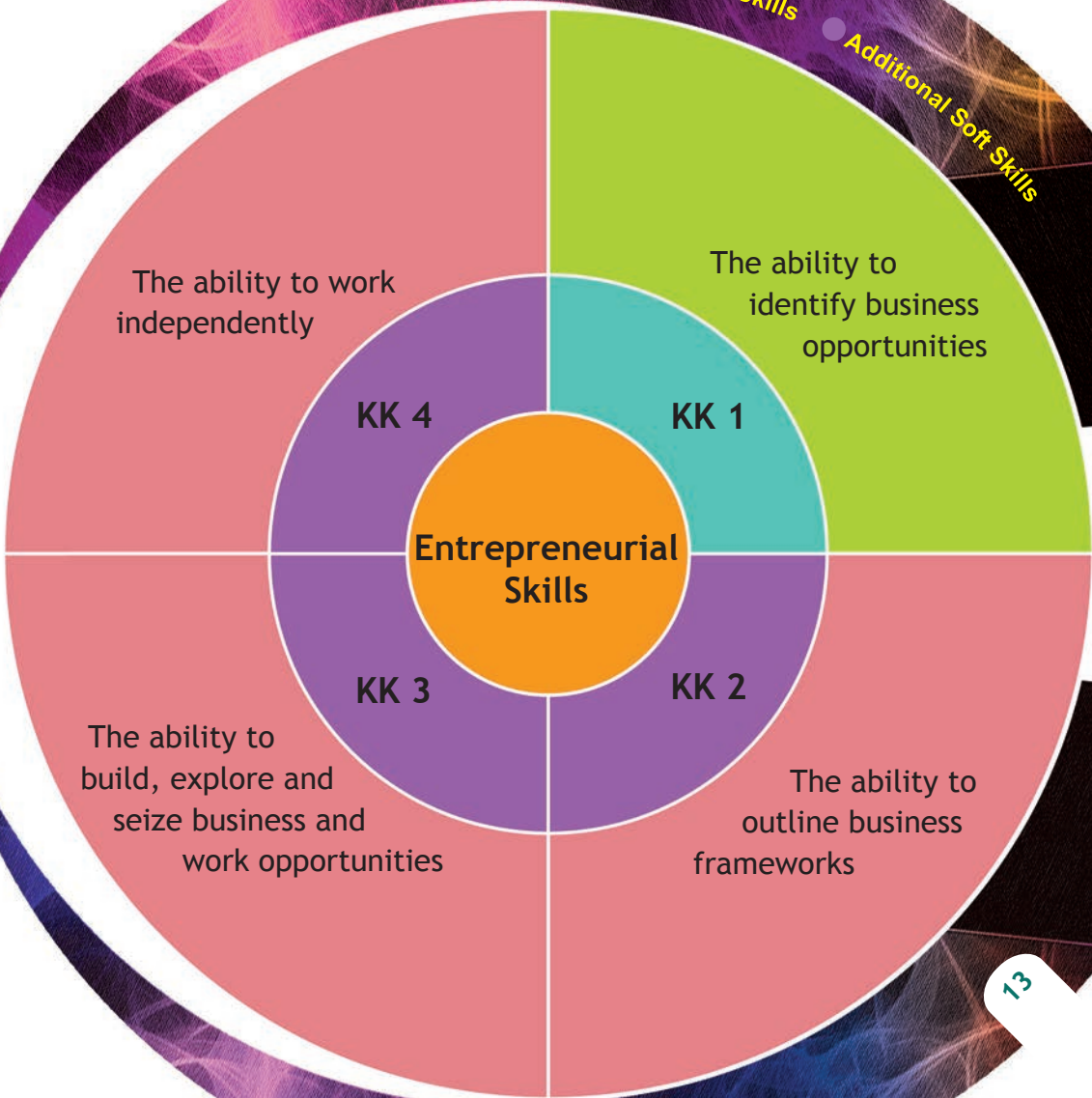
Team Work Skills

LEGEND:

- Basic Soft Skills
- Additional Soft Skills



LEGEND: ● Basic Soft Skills ● Additional Soft Skills



LEGEND:

- Basic Soft Skills
- Additional Soft Skills



LEGEND: ● Basic Soft Skills ● Additional Soft Skills





الجامعة الإسلامية العالمية ماليزيا
INTERNATIONAL ISLAMIC UNIVERSITY MALAYSIA
يُؤْتِي سَعْيَ الْإِسْلَامِ الْجَزَالَ بِمَلِكِيَّةٍ

Programme Outcomes

P01 Knowledge

P02 Practical Skills

P03 Social Skills and Responsibility

P04 Values, Attitudes and Professionalism

P05 Communication, Leadership and Team Skills

P06 Problem Solving and Scientific Skills

P07 Information Management and Life Long Learning Skills

P08 Managerial and Entrepreneurial Skills



STUDENT CENTERED LEARNING

CASE STUDY

It is an in-depth study of the unique characteristics of a certain process, situation, event or document.

PROBLEM BASED LEARNING (PBL)

It challenges students 'to study in order to study' as a team. PBL encourages students to think creatively and analytically as a team using relevant, realistic resources.

PROJECT ORIENTED PROBLEM BASED LEARNING (PoPBL)

This approach utilizes projects as the basis of teaching. It begins from the choice and formulation, to the running of the project.

MODULAR

This a self-study unit that is organized to improve the process of learning, encompassed within a course or programme of study.



IMPORTANT LINKS

IIUM STUDENT FEEDBACK SURVEY (SFS) SYSTEM
<http://elearn.iiu.edu.my/sfs>

IIUM LEARNING MANAGEMENT SYSTEM (LMS)
<http://elearn.iiu.edu.my>

Note: Both links also can be accessed from MyIIUM portal under My Services > Student/Academic

Centre for Professional Development (CPD)

Level 2, Education Building
International Islamic University Malaysia
53100, Jalan Gombak,
Selangor Darul Ehsan
T: 03 - 6196 4155 | F: 03 - 6196 4156
www.iium.edu.my/cpd/



الجامعة الإسلامية العالمية ماليزيا
INTERNATIONAL ISLAMIC UNIVERSITY MALAYSIA
بوتني برسيهي الشلالا انكالا نجسيا مللمستا